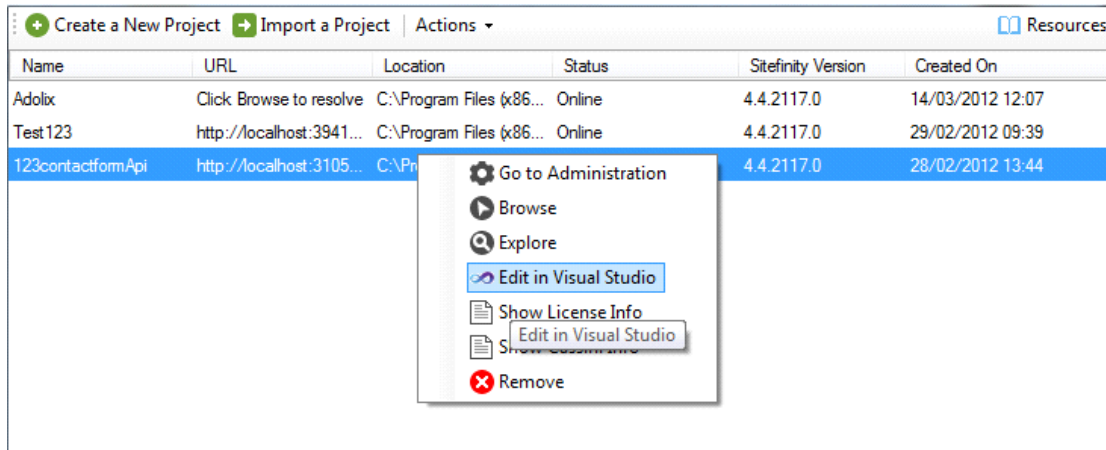
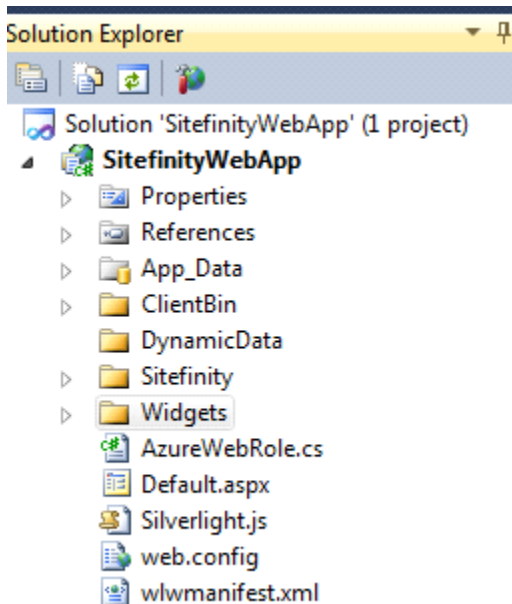


INSTALL 123ContactForm Widget in Sitefinity

1. Open **Sitefinity Project Manager**
2. Create a **new Website** and **configure it**.
3. Right Click on the "**Edit in Visual Studio**" link.



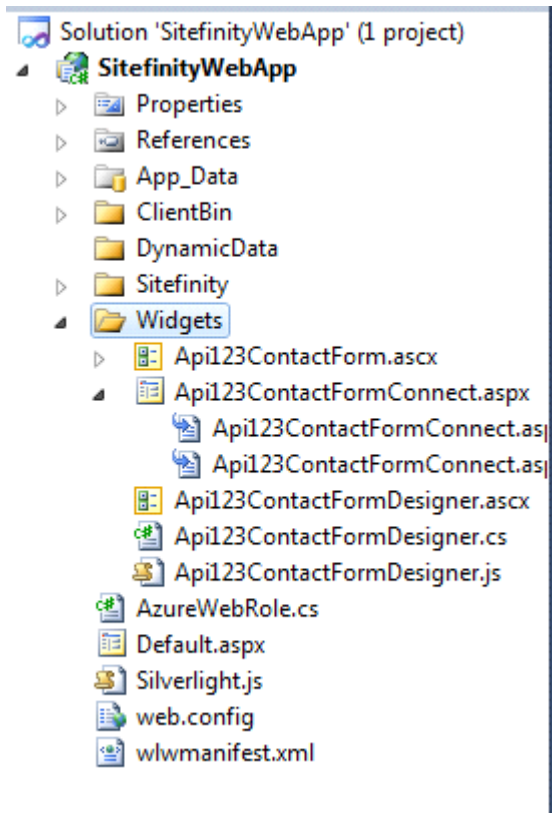
4. Once Visual Studio opens, you will see some project files on the right side .Create a new directory and rename it to "**Widgets**".



5. Upload in the "Widget" directory the 123ContactForm files. You will import the files by right clicking on the "Widget" directory -> Add -> Existing Item ...

After the files have been uploaded, do not forget to **Build** your project.(Press **F6**).

Your folder should look like this:



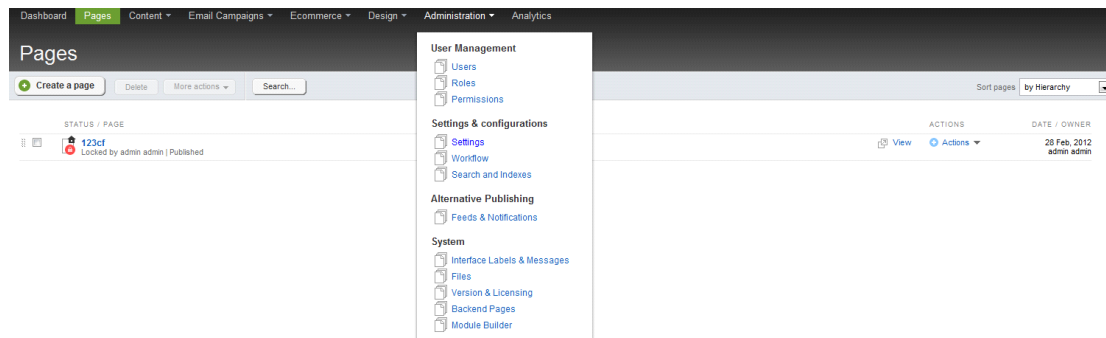
After this step, you can close the **Visual Studio** Enviroment.

6. Go to **Sitefinity Project Manager**, right click on your project and choose "**Go to Administration**".

Your default Browser should open a website url.

7. Use your User and Password to login into website administration.

8. Once you are logged in, go to **Administration** -> **Settings** .

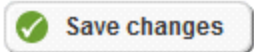
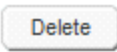


9. On the **Settings** Page, click the **Advanced** button.

10. Next , go to **Toolboxes -> Toolboxes -> Page Controls -> Sections** and create a new Section using the "**Create new**" button . Give a name and a title to your new Section.

In this example, the section will be named "**123CfWidget**".

11. Go to your new Section (123CfWidget) -> **Tools** and use the "**Create New**" button . This screen should appear:

 Save changes  Delete

123CfWidget

Enabled



Indicates whether a defined toolbox item should appear in the toolbox.

Control CLR Type or Virtual Path

~/Widgets/Api123ContactForm.ascx

Specifies CLR type for custom controls or the virtual path for user controls.

Name

123CfWidget

Defines the programmatic name of the item. This is the name used to access the item.

Title

123ContactForm Widget

Defines what name will be displayed for the item on the user interface.

Description

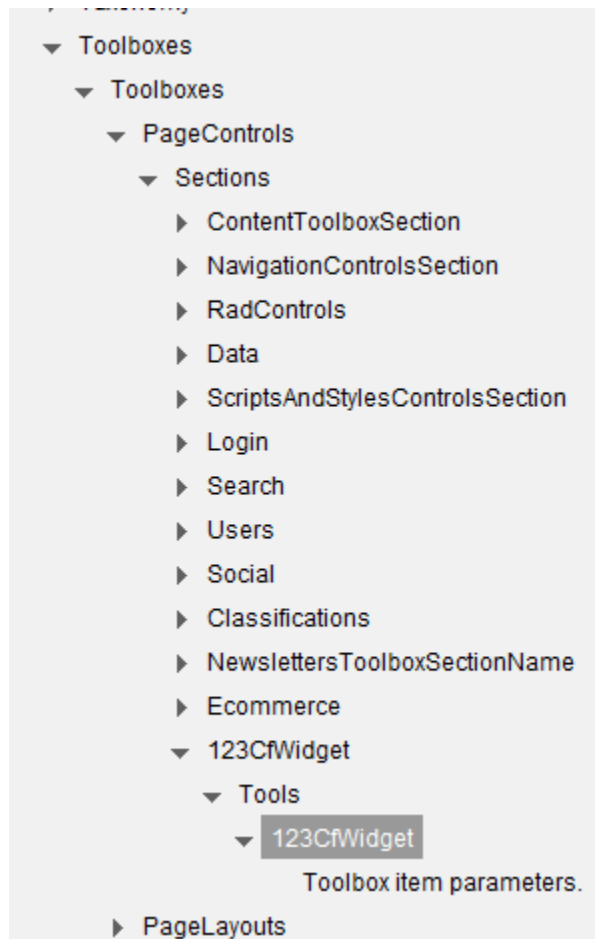
Describes the purpose of the control represented by this toolbox item.

Global resource class ID

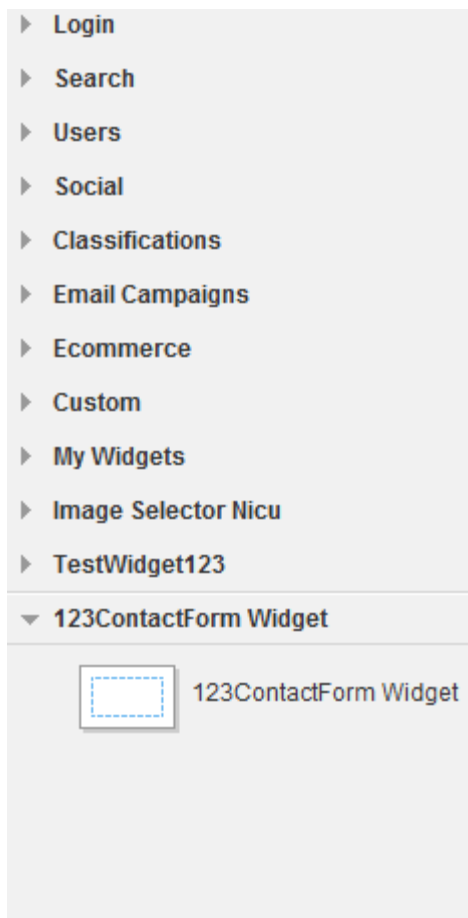
Insert in the "**Control CLR Type or Virtual Path**" the path to the main file of the project.

Important note: The **Control CLR Type** must be identical to the one used in our example!

Insert Widget name and Widget Title and click the "**Save changes**" button.



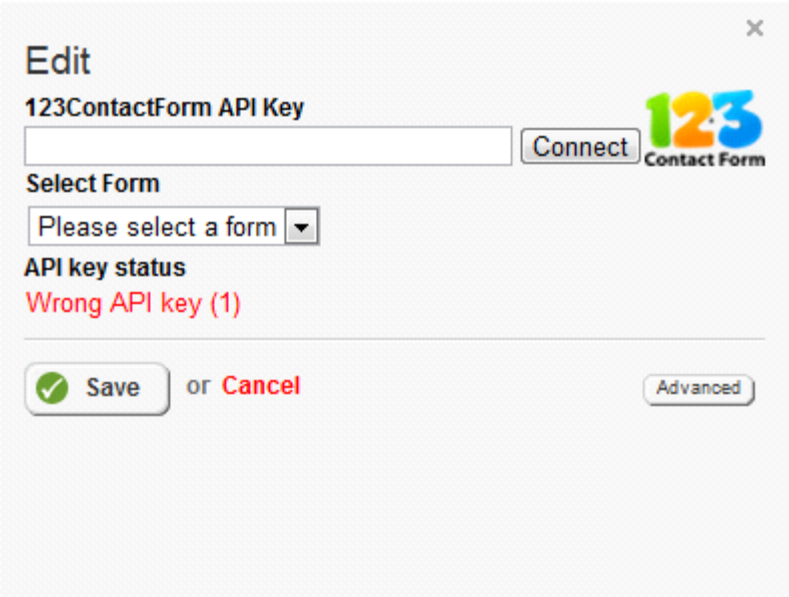
12. Now, you will go to "**Pages**". Open your page, and in the right bottom corner you should see the new Widget.



13 .Drag your widget into the page.


14. After you have dragged the widget into the page, use the Widget **Edit** button.

The following pop-up will appear:



Edit

123ContactForm API Key



Connect 

Select Form

Please select a form ▼

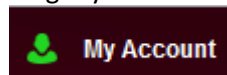
API key status

Wrong API key (1)

 Save or **Cancel** 

After you insert the API Key, hit the "**Connect**" button, and instead of "Plese select a form" you will see your www.123ContactForm.com forms. Select your Form and use the "**Save**" button.

To get your API Key, login to www.123contactform.com and go to "**My account**".



In the left side, you will be able to see the API Key. Just copy-paste it to Sitefinity 123ContactForm Widget.

15. You are ready to use your 123ContactForm Forms in Sitefinity.